

## Pedigree Puzzles

The pedigrees from many families suggest the results below.

Table 1: ABO Blood Types		
Parents' Blood Types		Children's Possible Blood Types
O	O	O
A	O	A or O
B	O	B or O
A	A	A or O
B	B	B or O
A	B	AB, A, B, or O

Workspace

Based on these results, figure out the possible allele pairs for each of the four blood types. It may help to make up one or two small pedigrees based upon specific rows of Table 1, using the workspace above.

**Blood Type**      **Possible Allele Pairs**

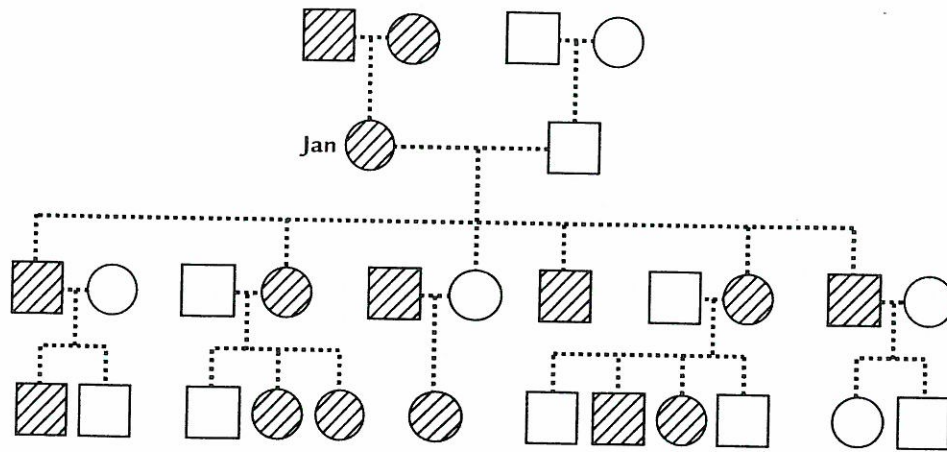
O                                      \_\_\_\_\_

A                                      \_\_\_\_\_ or \_\_\_\_\_

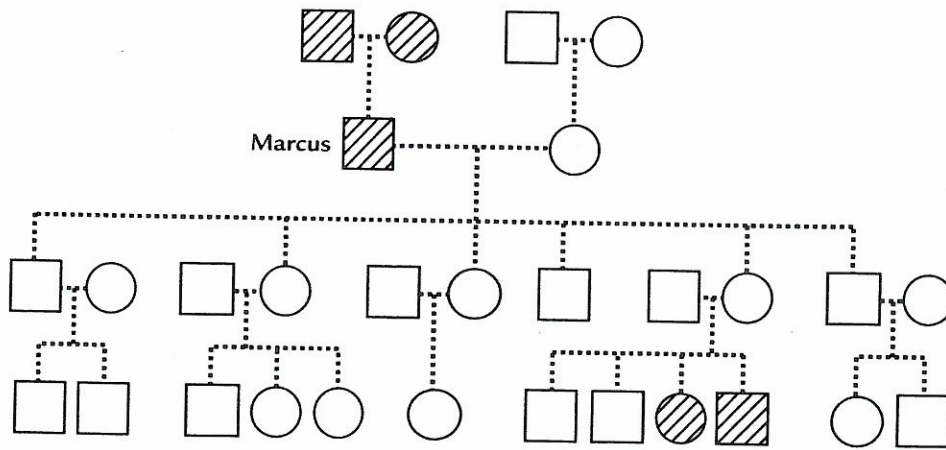
B                                      \_\_\_\_\_ or \_\_\_\_\_

AB                                      \_\_\_\_\_

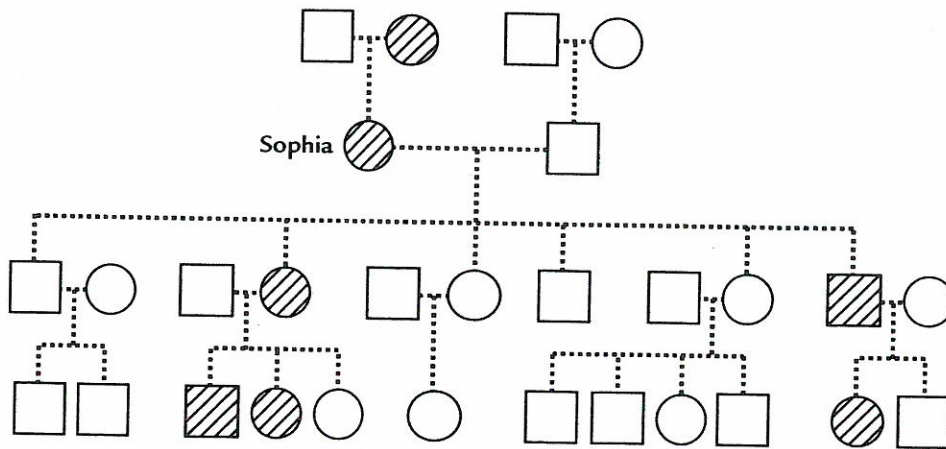
# Pedigree Puzzles



**Analysis Question 2**



**Analysis Question 3**



**Analysis Question 4**